



Dange Serenity , nr Capital Mall ,  
Alkapuri Rd, Yashvant Viva Twp  
Nalasopara East

# DANGE SERENITY



DANCE SERENITY



# Dange Group of Company

Established with a vision to redefine urban living, Dange Group of Companies stands as a trusted name in the real estate industry, backed by over 42 years of unmatched excellence. With a strong foundation built on integrity, innovation, and customer satisfaction, we have successfully delivered 30 landmark projects, transforming dreams into reality for 900+ happy families.

Our portfolio spans over 1 million square feet of thoughtfully planned and expertly constructed residential and commercial spaces. Every project we undertake reflects our unwavering commitment to quality, timely delivery, and modern design, ensuring peaceful possession and long-term value for our clients.

At Dange Group, we don't just build structures — we build trust, relationships, and lasting communities. Our legacy is not just in the buildings we've constructed, but in the lives we've touched.



# Prime Location



Live in the heart of convenience—near Capital Mall, top hospitals, reputed schools, and the railway station.



# Amenities



## Open GYM

Stay fit in the fresh air with our fully equipped open gym — designed for all age groups to enjoy a healthy and active lifestyle right within your community.



## EV Charging Point

Power up your electric vehicle with ease — our EV charging point offers convenient, eco-friendly charging right within the premises.



## Kids Play Areas

A safe and joyful space where children can play, explore, and grow— designed to spark imagination and keep little ones active and happy.



## Terrace Garden

Experience peace and greenery above the city with our beautifully designed terrace garden — a perfect spot to relax, unwind, and enjoy nature from the top.



## Community Areas

Thoughtfully designed community areas that foster togetherness, offering the perfect space for social gatherings, celebrations, and a vibrant neighborhood life.



## Security Features

Your safety is our priority – with 24/7 CCTV surveillance, trained security personnel, gated entry, and advanced access control for complete peace of mind.



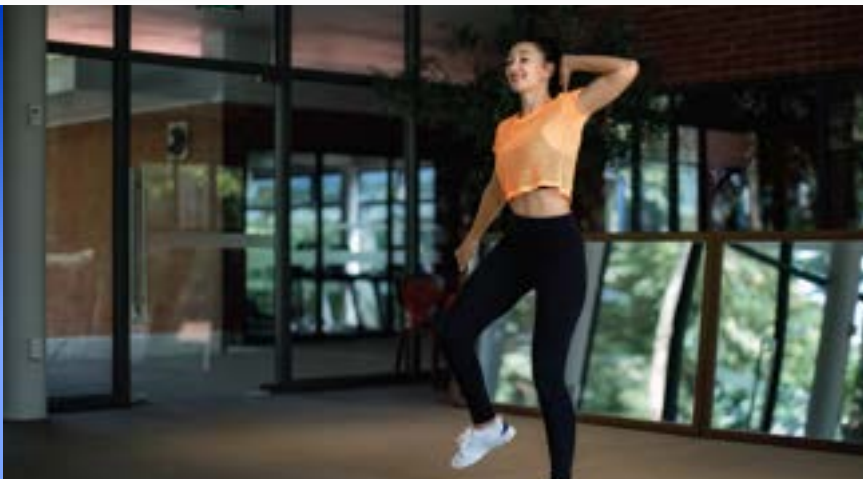
## Convenience

Experience unmatched convenience with everything you need—shopping, schools, healthcare, and transport—just minutes away from your doorstep.



## Eco-Friendly Living

Experience sustainable living with eco-friendly features like rainwater harvesting, solar lighting, and green landscaping — designed to reduce your carbon footprint and promote a healthier lifestyle.







# Overview

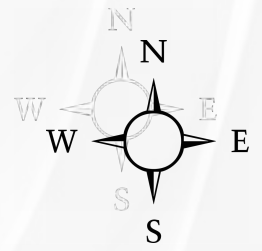
1BHK

[ CA : 453 sq.ft ]

2BHK

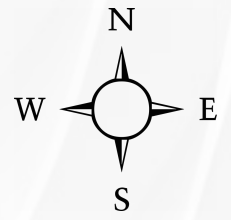
[ CA : 613 sq.ft ]

# 1 BHK Plan





# 2 BHK Plan





# Specifications

1

Spacious Floor  
Plans

2

High-Quality  
Finishes

3

Modern Kitchen,  
Bedrooms and  
Bathrooms





4

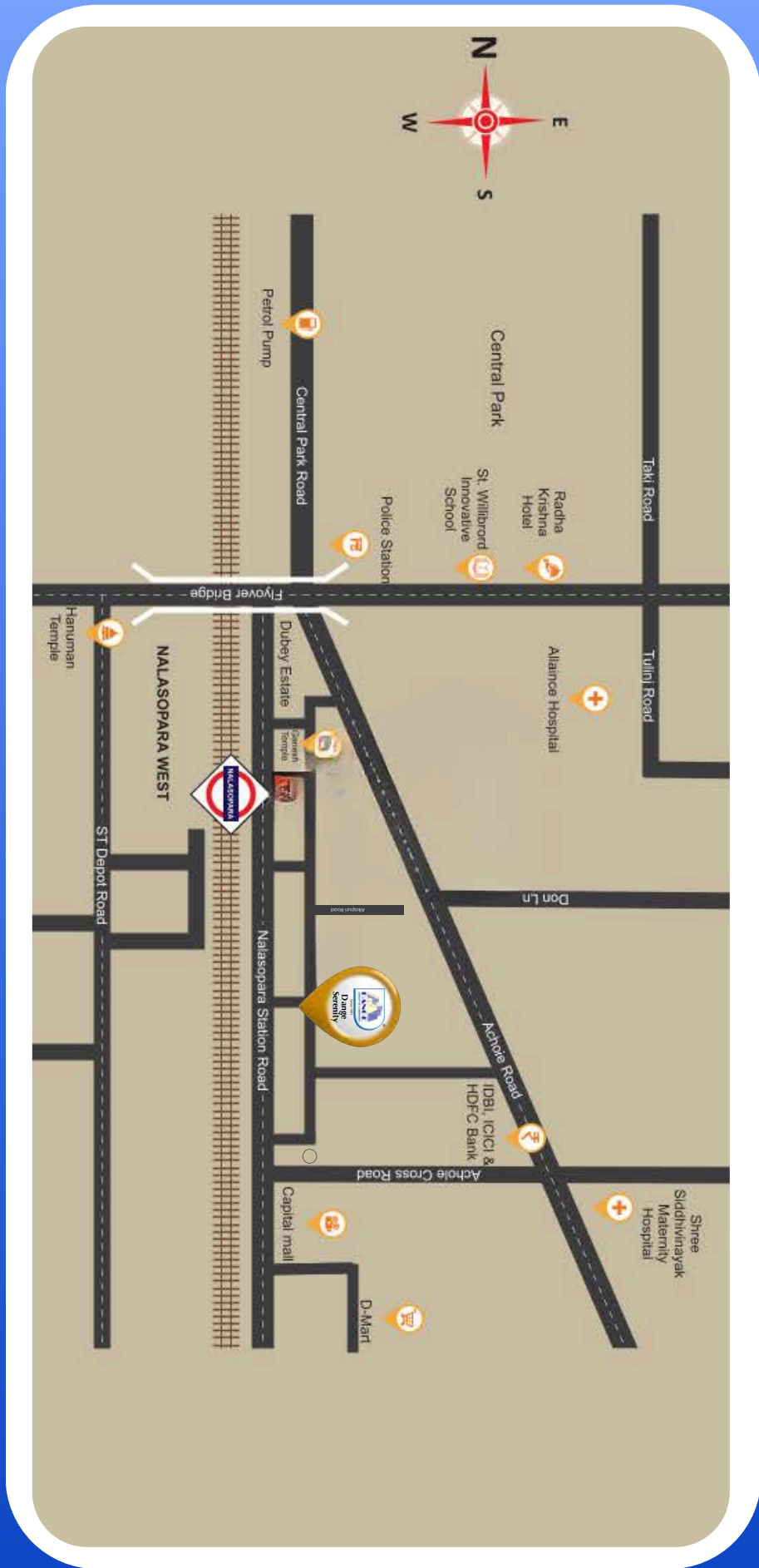
Smart Home  
Technology

5

Energy  
Efficiency

6

Parking and  
Storage



Location Map



# Location Benefits

1

## Proximity to Amenities

Enjoy seamless living with close access to essential amenities like malls, hospitals, schools, and railway stations—everything you need just minutes away.

2

## Excellent Transportation Links

Enjoy seamless connectivity with excellent transportation links, ensuring easy access to key city hubs, business centers, and daily essentials.

3

## Top-Rated Schools

Give your children the best start with easy access to top-rated schools nearby—ensuring quality education just minutes from home.

4

## Green Spaces and Recreation

Experience peace and relaxation amidst lush green spaces, thoughtfully designed for leisure, play, and community bonding—bringing nature closer to your everyday life.

5

## Safe and Secure Neighborhood

Experience peace of mind in a safe and secure neighborhood, where 24/7 surveillance and a caring community ensure your family's well-being every day.

6

## High Growth Potential

Located in a rapidly developing area, this project offers high growth potential—promising excellent returns on investment and future value appreciation.

# Contact Information

---

## Dange Serenity

Call on:

**+91 9175 973 366**

Site Address:

**Dange Serenity , Near Capital Mall , Alkapuri Rd, Yashvant  
Viva Twp, Nalasopara East, Nala Sopara, Maharashtra 401203**